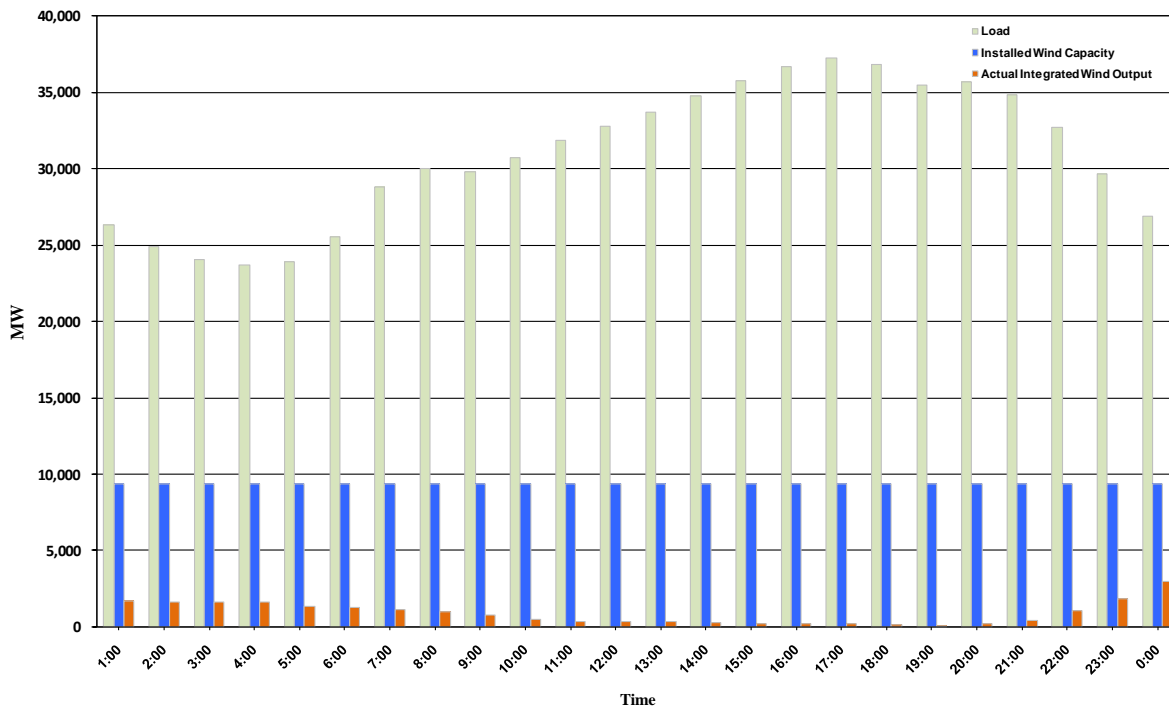




ERCOT Grid Operations Wind Integration Report: 10/14/10

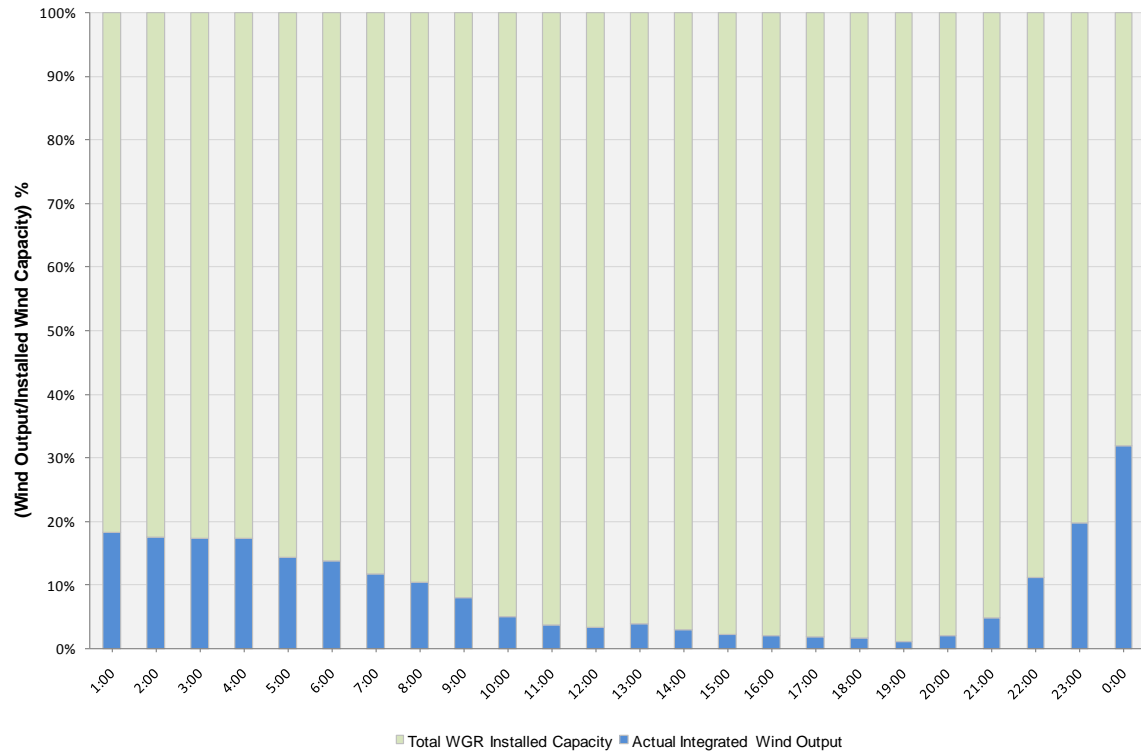
Peak Load	37,229 MW
Load Peak Hour	17
Wind Record 06/12/10	7016 MW
Max Wind value	3389 MW
Wind Peak Hour	23:59:52
Wind Integration %	13.20

Hourly Average Actual Load vs. Actual Wind Output
10-14-2010

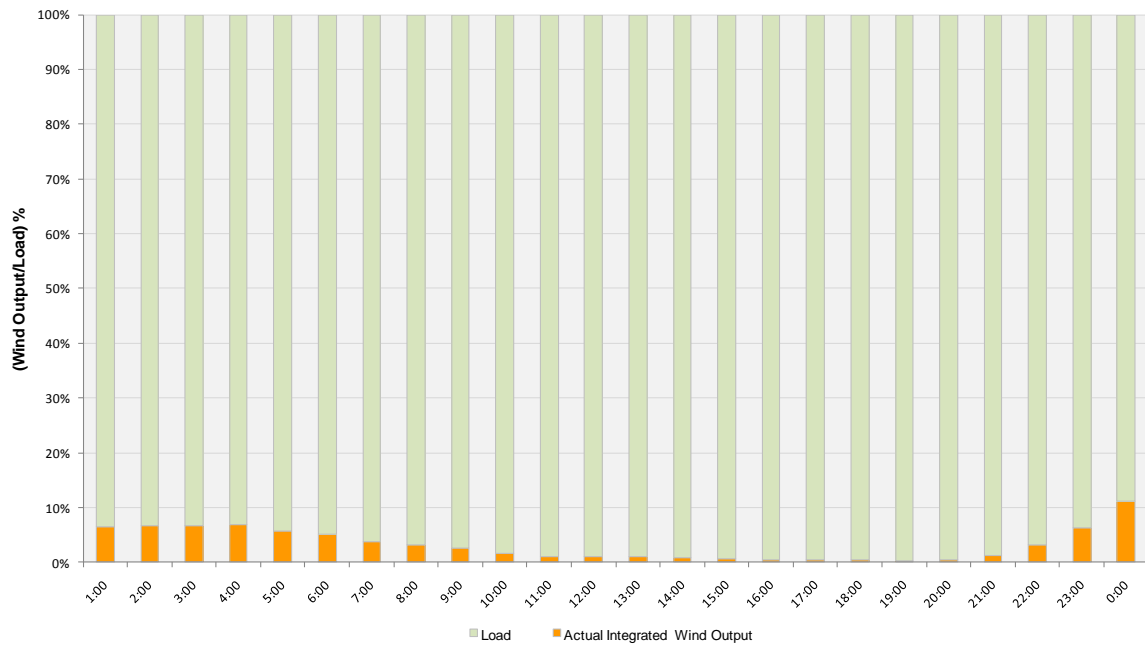




Actual Wind Output as a Percentage of the Total Installed Wind Capacity
10-14-2010



Actual Wind Output as a Percentage of the ERCOT Load
10-14-2010





ERCOT Load vs. Actual Wind Output 10/07/10 - 10/14/10

